



AUCTION

LEADING THE INDUSTRY SINCE 1945

AUCTION #1 - TUESDAY – MAY 22, 2018 – 6:00 PM
AUCTION #2 - WEDNESDAY – MAY 23, 2018 – 6:00 PM

AUCTION #1 - 1 ½ STORY FIXER-UPPER HOME ON 1.29 ACRES - PART WOODED LOT – SHALERSVILLE TWP. – PORTAGE CO. – CRESTWOOD SCHOOLS

Absolute auction, all sells to the highest bidders on location:
9228 COIT RD., RAVENNA, OH 44266

Directions: Take Infirmary Rd. north of Rt. 14 to Coit and left – or - Coit Rd. south of Rt. 303. Watch for KIKO signs.

Open For Inspection 4:00 PM

1 ½ story, 3 or 4 bedrooms, 2 baths, vinyl-sided home with full basement, built 1950, 1,344 sq. ft., FA oil heat, drilled well and septic. 1.29-acre part wooded lot. Garage and parking area. Replacement windows. Nice setting. Needs some TLC. Nice setting.



Auction #1



TERMS ON REAL ESTATE FOR BOTH AUCTIONS: 10% down auction day, balance due at closing. A 10% buyer's premium will be added to the highest bid to establish the purchase price, which goes to the seller. Any desired inspections must be made prior to bidding. All information contained herein was derived from sources believed to be correct. Information is believed to be accurate but not guaranteed.

Auctioneer/Realtor:

Russell T. (Rusty) Kiko, Jr., C.A.I., ext 115,
330-495-0923

Auction By Order Of: Hometown Bank

Information is believed to be accurate but not guaranteed.



330.455.9357 • kikoauctions.com



AUCTION #2 - VERY SECLUDED 84 ACRES MOSTLY WOOD-ED WITH LAKES PLUS FIXER UPPER 5,700 SQ. FT. A-FRAME STYLE HOME ON LAKE – BUILT IN 1992 – TWO-CAR DE-TACHED GARAGE – TIMBER – ETC. - SOLD IN TWO TRACTS PALMYRA TWP. – PORTAGE CO. – SE SCHOOLS 5 MINUTES OFF I-76 BETWEEN AKRON & YOUNGSTOWN

Absolute auction, all sells to the highest bidders on location:

5063 MCCLINTOCKSBURG RD., NEWTON FALLS, OH 44444

Directions: Take I-76 to St. Rt. 225 and north to Cableline Rd. and east to McClintocksburg Rd. and south – or – McClintocksburg Rd. north of (Rt. 18) Tallmadge Rd. to sale. Watch for KIKO signs.

Auction #2A



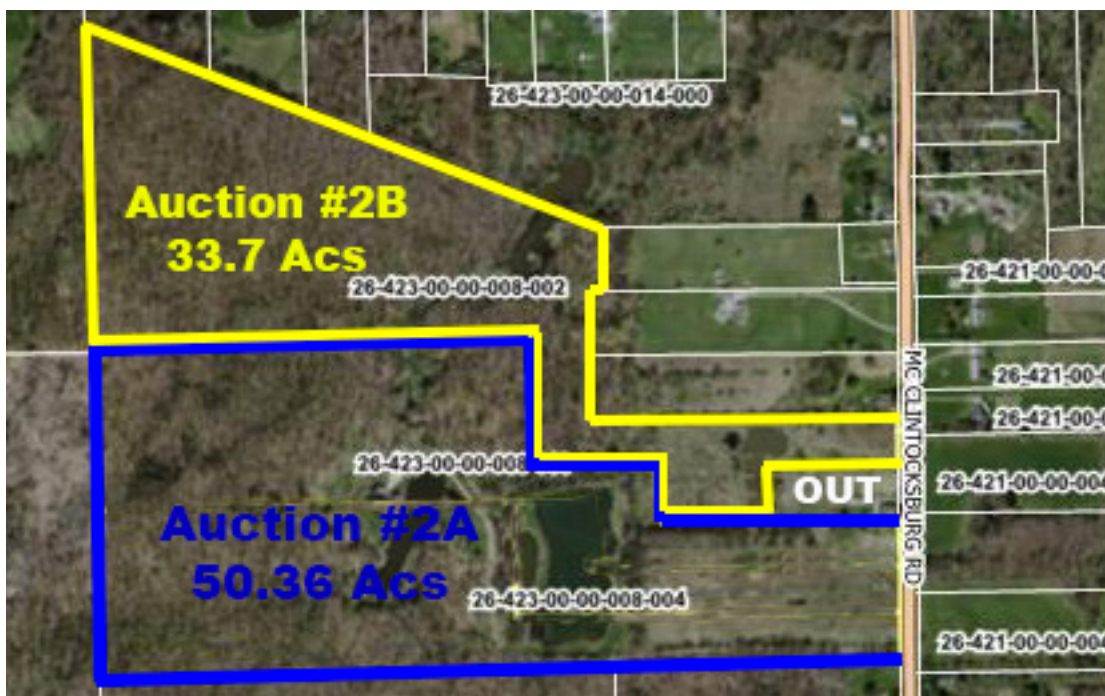
Auction #2B



Open For Inspection At 4:00 PM

Auction Parcel #2A – 50.36 acres with 5,700-sq.-ft. home – detached garage – two lakes – very secluded setting – back long private drive – cathedral ceiling – decks – pool – several bedrooms and baths – partial basement – detached 2-car garage – outdoor wood furnace plus gas well – unique setting – overlooking lake – wood sided – open lofts – loads of potential but needs lots of work – bring your contractor - map and photos on our website.

Auction Parcel #2B – Adjoining 33.7 acres wooded land with small lake – timber – secluded.



Auctioneer/Realtor®
RUSSELL T. (RUSTY) KIKO, JR.
330.495.0923
rustykiko@kikocompany.com



330.455.9357 • kikoauctions.com

